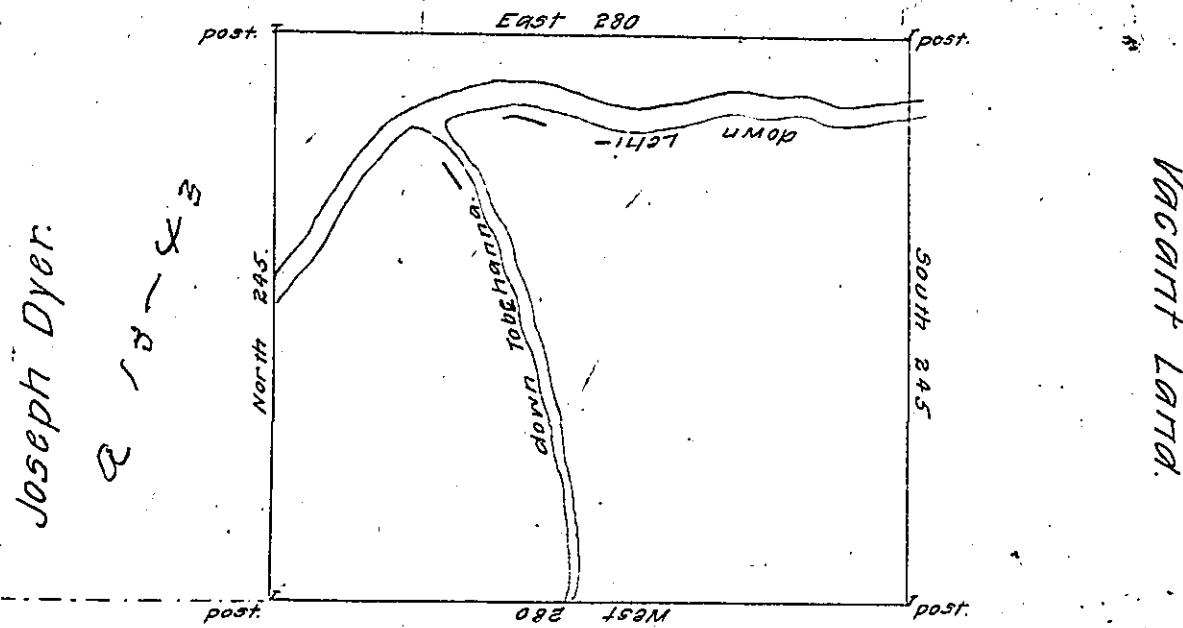


Vacant Land.



Vacant Land.

By Virtue of a Warrant dated the 1<sup>st</sup> July 1784 Surveyed  
 the 7 May 1785 to Mary Wright the above described tract of  
 land situate at the Confluence of Tobehanna and Lehi in  
Norampton County Containing four hundred and four Acres  
 seventy six perches and the Allowance of six P. Cent. &c<sup>a</sup>.

P-Geo. Palmer. —

John Lukens Esq<sup>r</sup>  
 Surveyor General.

IN TESTIMONY that the above is a copy of the original remaining on file in  
 the Department of Internal Affairs of Pennsylvania, made  
 conformably to an Act of Assembly approved the 16th day of  
 February 1833, I have hereunto set my hand and caused  
 the Seal of said Department to be affixed at Harrisburg,  
 this twenty seventh day of June 1907.

*Henry Howell*  
 Secretary of Internal Affairs.